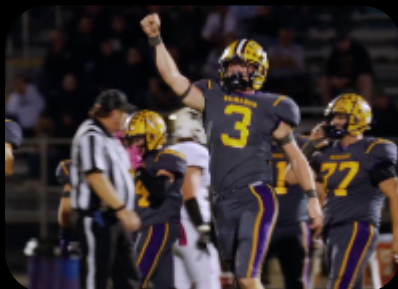




FINDING FAITH: Small Group Bible Study inspired by the movie “We Believe”

## INTRODUCTION

*We Believe* is a faith-based sports drama that follows two intersecting stories from the St. Marys, West Virginia, high school football community. The film intertwines the true accounts of two coaches: Coach Jodi Mote, who suffers a stroke, and legendary Coach Bill Hanlin, who steps in to lead the team. Through these stories and fictional subplots, the movie explores how faith, family, and football can serve as a guide for a successful life. The narrative is a testament to the power of a community's faith and the lessons of perseverance, teamwork, and reliance on God that are learned on and off the field.



# DISCUSSION QUESTIONS

## 1. THE ROLE OF MENTORSHIP AND LEGACY

- The film connects the past and present through the mentorship of two coaches, Bill Hanlin and Jodi Mote. How does the movie show that the values of faith and character are passed down through generations of mentorship?
- Read 2 Timothy 2:2. Paul instructs Timothy to entrust the truths he has learned to "reliable people who will also be qualified to teach others." How does the relationship between the two coaches, and their impact on the young players, exemplify this biblical principle of spiritual legacy?



## 2. FAITH IN THE FACE OF ADVERSITY

- Coach Mote's sudden stroke and his difficult path to recovery are central to the film. How does the movie portray his struggle and the community's response? What does his journey teach us about maintaining faith when our lives are disrupted by unexpected tragedy?
- Read Romans 5:3-4. This passage says that we can rejoice in our sufferings because they produce perseverance, character, and hope. How does Coach Mote's journey reflect this truth? How can a community's support during a time of suffering become a powerful testament to their faith?



## DISCUSSION QUESTIONS

### 3. FINDING REDEMPTION AND PURPOSE



- Trey, a troubled teenager from a broken home, adds a layer of conflict and redemption to the narrative. How does the movie suggest that Christian values and a supportive community can offer a path to healing and a renewed sense of purpose for those who are struggling?

- Read Ephesians 2:10. This verse states that we are God's handiwork, created in Christ Jesus to do good works. How does Trey's story illustrate the idea that God has a purpose for each of us, regardless of our past?

### 4. THE PARALLELS BETWEEN FOOTBALL AND FAITH

The film draws a direct parallel between the "playbook" of football and the playbook for a successful Christian life. What are some of the similarities between the discipline, teamwork, and perseverance required in football and the qualities needed for a strong Christian walk?

Read Hebrews 12:1-2. The author of Hebrews compares the Christian life to a race that requires endurance and discipline. What lessons from the football field, such as perseverance and relying on others, can be applied to our spiritual journey?





## REFLECTION & APPLICATION

**Reflect on a time in your life when you faced a significant challenge. How did your faith guide you through it?**

Consider a person in your life who has been a spiritual mentor. How have their values influenced your own life?



## PRAYER

Close the Bible study with a time of prayer, thanking God for mentors who have guided us and for the communities that support us in times of trial.

Pray for the strength to face adversity with faith and for the wisdom to see how God can use even our struggles for His glory.



## CONCLUSION

Like the people of St. Marys, West Virginia, our lives are a testament to what we believe. The film encourages us to see our own challenges not as obstacles, but as opportunities to demonstrate our faith. By relying on God and leaning on our community, we can find victory not just on the field, but in every aspect of our lives.